

# August

St Luke Union Church

## Thank You for Your Healing Prayers

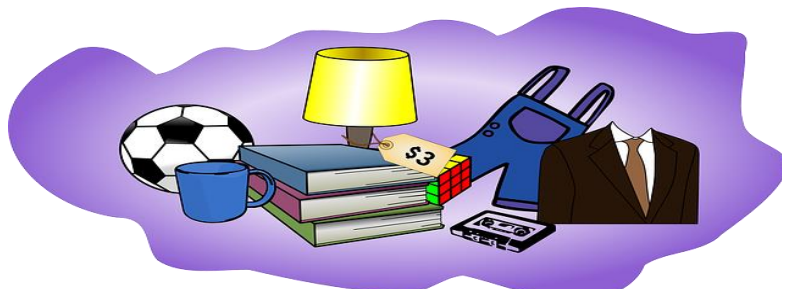
My dad, Bill Menzel, asked me to put out a note of thanks to everyone at St. Luke Union Church for the all of the prayers and cards he received while he was in the hospital and home recovery. It meant so much to him.

I am so grateful to be a part of such a wonderful church family.

Deb Harrison

## Save the Date: Fall Group Sale October 18<sup>th</sup> and 19<sup>th</sup>

Save the week of October 13<sup>th</sup> for set-up and bringing in your treasures. Now is the time to clean out your closets.



**Pastor Andy Joke:** Who in the Bible knew the most people?

**Trivia Question:** Some of the earliest Christian Bibles were hand-written and illustrated. Who generally did this work in the Dark Ages and medieval times?



# AUGUST 2024

SUN

MON

TUE

WED

THU

FRI

SAT

01

02

03

Men's Breakfast  
7a

04

05

06

07

08

09

10

Communion  
Worship 10:30a

Boy Scouts 7p

Mission Team  
5:30p

Crossroads Board  
9a

DAR Chapter  
Potluck 11a

11

12

13

14

15

16

17

Worship 10:30a

Boy Scouts 7p

Resource Team  
2p  
Finance Mtg 5p

Worship Team 5p

Faith Brews 5p

18

19

20

21

22

23

24

RaiseRight Sun.  
Worship 10:30a

Boy Scouts 7p

VMC Mtg 5:30p

Presbytery of  
Great Rivers –  
Listening Session  
10a

Piano Recital 2p

25

26

27

28

29

30

31

Worship 10:30a

Boy Scouts 7p

Lamplighters 7p

**Happy Birthday!** Phillip Blankenship, Ed Gottschalk 8/3; Joyce Pomrenke 8/13; Kevin Schaefer, CJ Wahmann 8/17; Marshall Davis 8/20; Mindy Feicke, Laura Hinthorn, Nicole Southwick 8/28; Jerry Turley, Chuck Yurieci 8/29; Sharon Stille 8/30; Dan Staver 8/31

**Happy Anniversary!** Jim & Judy Ferrier 8/1; Norm & Debbie Lopez 8/10; Dan & Carla Staver 8/18; Richard & Yvonne Harrison 8/27



## The Community Players Singers

We will be volunteering at the Midwest Mission Distribution Center in Chatham, IL on Wednesday, September 4, 2024. A sign-up sheet is on the table in Fellowship Hall for those wanting to participate. Contact Larry or Marilyn Maffett at (217)737-0150 if you have questions.

The team is collecting the following items to take with them. These items are put into kits and distributed internationally. Donated items can be placed in the receptacles in Fellowship Hall.

### Items for School Bags

Rulers – 12” with metric  
Unsharpened pencils  
Pencil sharpener  
Box of 12 crayons  
Box of 24 crayons  
Students scissors  
Spiral one-subject notebooks, 8”x10½”

### Items for Women’s Hygiene Kits

Child’s underwear, sizes 10-14 (new)  
Women’s underwear, sizes 5-8 (new)

The Community Players Singers, a group of performers from Community Players Theatre, do free half an hour to an hour-long shows around the area. They’ve appeared at various churches, retirement communities, ISU, the ARC, downtown Bloomington, uptown Normal, and also provided entertainment for the Marine Ball. They specialize in music from Broadway shows and the American Songbook, as well as seasonal standards. If you’re interested in booking them for a performance, please contact Sally Parry at [separry@ilstu.edu](mailto:separry@ilstu.edu)

Our church sign is generating some positive feedback. We received the following message from a member of the community who drives by often:

Hello,

I just wanted to let you know I really appreciated what was on your sign today. I go by your church often, and always love to see what you have on it. But today, I was concerned about a possible health issue, and was on my way to OSF for a test, and what was there was so encouraging about God is already in the future. I am a member of another church, but I wanted to let you know they are appreciated!

The sign read “Fear Not Tomorrow, God Is Already There”

Let Susan know if you have a suggestion for the sign. Remember that shorter messages are preferred.

**Pastor Andy Joke Answer:** Abraham, he knew a Lot.

**Trivia Answer:** Monks

Bibles and other books of scripture were produced by monks in the early monasteries. They were written in Latin, in finest calligraphy and with illuminated pages and letters. One example is the Book of Kells which was produced about the eighth century and contains the Four Gospels. It can be seen at Trinity College Library in Dublin.

## FOOD PANTRY SUNDAY IS ALWAYS THE FIRST SUNDAY OF THE MONTH

### Our next Salvation Army food drive is on August 4

In choosing what to donate to the Salvation Army Food Pantry, let's make sure we help stock their shelves with what they need – and avoid what they don't need!

#### **What they need:**

High priority: Canned Soup (pop-top preferred) and Macaroni and Cheese  
Canned fruit - preferably packed in natural juice  
Canned meat – chicken, ham, SPAM  
Canned fish – tuna and salmon  
Soups, Stews, Chili - either canned or packaged  
Boxed dinners – Mac & Cheese, Hamburger Helper  
Boxed cereals – preferably whole grain, low in sugar  
Canned beans – pinto, pork 'n beans, etc.  
Applesauce  
Peanut Butter  
Crackers  
Granola Bars  
Instant mashed potatoes  
Pasta – spaghetti, as well as spaghetti sauce  
Rice  
Powdered milk

#### **What they don't need:**

Anything that has to be baked  
Junk food  
Anything that needs a can opener -- (pop-top cans are best)  
Anything in glass containers or cellophane wrapping

## Stand Down for Veterans 2024

Goodwill of Central Illinois is planning for the 2024 STAND DOWN FOR VETERANS. As in the past the Missions Team will be supporting this and asking for your support. As always, we need XL winter gloves (men's and women's). Luckily, this was a mild year winter-wise and there have been some excellent sales already. Johanna Wagner, Assistant Director of Program Services, is also looking for socks and diabetic socks this year. The goal is to provide three pairs of socks per client, and every year Stand Down has had about 200 clients.

Other items include:

Pillows – full size

Toiletries – men's and women's

For anyone who wants to donate but not shop, make checks payable to Goodwill Industries- with "STAND DOWN 2024" in the memo line. Send checks to:

Goodwill Industries  
Attn: Johanna Wagner  
2319 E War Memorial  
Peoria Il. 61614

Thank you all for your support.



### **Fun and Fellowship at the CornBelters Game**

On Friday June 26<sup>th</sup>, twenty St Luke Union Church members enjoyed a CornBelters game compliments of LS Mechanical. We were told there were going to be free hot dogs, but we were treated to a royal Corny buffet. It included hot dogs, brats, burgers, chips, popcorn, sodas, water and Krispy Kreme Doughnuts! We enjoyed a very exciting game and the CornBelters won 16-6, after eight innings due to the 10-run rule. And of course there were fireworks! Thank you LS Mechanical!



### **Youth Sunday June 30, 2024**

Youth Group members sharing their experiences and what they learned in Las Animas, Co while participating in the Group Mission Trips Workcamp. Thank you to our youth and leaders for being positive role models, representing St Luke Union Church in our community and beyond.

## Planting, Faith and Trust, Things I learned Helping with Spring Planting

*Be patient, then, brothers and sisters, until the Lord's coming. See how the farmer waits for the land to yield its valuable crop, patiently waiting for the autumn and spring rains. —James 5:7*

This spring I was invited to help a local farmer friend with his spring planting of corn and soybeans. After enjoying my time helping with the fall harvest I was happy to step in. What I came to realize is there is a different mindset in the spring than the fall. In the fall there is the expectation of the harvest, selling of the crop and finally getting paid for a season of labor. In the spring there is a great output of investment and expectation, but there is also a great need to trust and have faith. Trust in your ability and the equipment to prepare and get the seed in the ground at the right time. Faith that it will rain at the right time and the plants will grow with a high yield. In the spring there are more questions than answers, there is a greater need for trust and faith.

Trusting requires us to hold a deep faith and reliance on the belief that God's plans and actions are good, wise, and just. This must take place even when we do not fully understand the plan, or why things occur outside of our control or expectation. When a farmer plants a field they must have faith and trust.

We too must hold faith and trust which we can see when we hold **Faith in God's Character**, trusting God's goodness, love, wisdom, and sovereignty over all things. Then acknowledging God is ultimately in control and has our best interests at heart. We then must **Surrender and Submit**, trusting God is in control and letting go of our own desires, and plans. This can be challenging but is rooted in the belief that God's ways are higher than our ways. We need to hold **Confidence in His Promises**: trusting the promises of God as revealed in Scripture. Believing that God is faithful to His promises and will fulfill them in His perfect timing. We must have **Patience in our Waiting**, and trusting God sometimes means waiting patiently for His timing and not trying to force our own solutions or outcomes. If we can find **Peace and Assurance**, in our trust and faith it will bring a sense of peace, even in difficult circumstances by knowing God is with us and will provide for our needs. And finally, with faith and trust in God there is a call to **Action and Obedience**. Trust and faith is not passive; it often involves taking steps of faith and obedience in response to God's guidance and leading. If we see a need it's because God has shown you that need. We are the hands and feet of God and when we are called to an issue, we must fix it.

Ultimately, trusting God is a deep, personal conviction that influences how we live, make decisions, and relate to others. It is a journey of growing in faith and reliance on God's wisdom and goodness. Trust and faith of a farmer can be a great example of God's grace.

*May the God of hope fill you with all joy and peace as you trust in him, so that you may overflow with hope by the power of the Holy Spirit. — Romans 15:13*

Blessings  
Pastor Andy

## CONTACT US!

Rev. Dr. Andrew Gifford, Pastor

agifford@stlukeunion.org

Susan Walter, Office Manager

swalter@stlukeunion.org

### Website:

[www.stlukeunion.org](http://www.stlukeunion.org)

### Facebook

Like our Facebook page for updates on church news, events & Reginald's whereabouts! Sunday Worship will go Facebook LIVE at 10:30am!

[www.facebook.com/](http://www.facebook.com/)

[stlukeunionchurch](https://www.facebook.com/stlukeunionchurch)

### YouTube

Search: [St Luke Union Church](#)

### Church Office Hours:

Monday: 9a – 3p

Tuesday: 9a – 3p

Wednesday: 9a – 3p

Thursday: 9a – 3p

Friday & Saturday: Closed

### Phone:

309-663-7437

### Worship

Online + In-Person

Sunday 10:30am!



## **St Luke Union Church**

2101 E Washington St Bloomington, IL 61701

(Corner of Regency Drive and Washington St – open 24 hrs/7 days a week)

### **TerraCycle Programs & Other Collections**

Collection is in the garage behind the church where collection containers are labeled;  
**if you do not see a container, please DO NOT leave it.**

---

**ARM & HAMMER® and OxiClean®:** ARM & HAMMER and OxiClean plastic pouches. (Must be these brands only)

**Bausch + Lomb ONE Contact Lens Recycling:** All brands of contact lenses, plus foil and blister packaging.

**GoGo SqueeZ Baby Food Pouches Recycling:** All baby and toddler food plastic pouches and caps (such as Go-Go Squeeze, Ella's, Earth's Best, etc.). **Please - Leave caps on to reduce smell and mold.**

**Brita® Recycling Program:** Brita pitchers, individual filtration bottles, filters, foil filter packaging, and faucet filtration systems. (Must be this brand only.)

**Burt's Bee Recycling:** Burt's Bee products packaging. (Must be this brand only.)

**Cigarette Waste Recycling Program: NO DROP OFF - PLEASE CONTACT AMIE ([joelamiekeeton@gmail.com](mailto:joelamiekeeton@gmail.com) or 309.242.8871) FOR MORE INSTRUCTIONS.** Program accepts cold extinguished cigarettes, cigarette filters, loose tobacco pouches, outer plastic packaging, inner foil packaging, rolling paper and ash.

**Colgate/Tom's of Maine Dental and Deodorant Recycling:** All brands toothpaste tubes and caps, toothbrushes, floss containers, mouthwash bottles and caps, plastic deodorant containers and caps; also, clear plastic cover from toothbrush/dental floss packaging (remove cardboard backing and put in city recycling first). **Please note: no aerosol cans which go into regular city recycling.**

**Honest Kids Drink Pouch Recycling Program:** Flat, flexible aluminum/plastic drink pouches and their straws. Any brand accepted. Must be completely empty.

**Entenmann's Little Bites Pouches Recycling Program:** Entenmann's brand Little Bites plastic pouches and clear Entenmann's Minis packaging. (Must be this brand only.)

**eos:** eos lip, lotion and shave packaging. (Must be this brand only.)

**Febreze® Air Care Recycling Program:** All brands of air freshener plastic cartridges, plugs, packaging and flexible plastic film packaging, trigger heads and Mr. Clean Deep Cleaning Mist bottles and trigger heads. **(Aerosol spray cans go into city recycling).**

**Garnier® Personal Care & Beauty:** Emptied Plastic Garnier personal care or beauty product containers, tubes and lids. (Must be this brand only.)

**Gerber®:** Gerber baby food packaging and small and large hook Gerber Baby clothing hangers. (Must be this brand only.)

**Gillette® Razor Recycling Program:** All brands of razor blades; plastic and metal razors; flexible plastic bags and rigid plastic razor packaging. Clean and dry before donating.

**GOLDTOE® Socks:** All brands of used, clean socks.

**Kroger - Our Brands Recycling Program:** Kroger flexible plastic packaging. (Must be this brand only.)

**Late July® Snacks Recycling Program:** Late July® brand plastic snack packaging and chip bags. (Must be this brand.)

**PopSockets® & Cell Phone Cases:** Grips, mounts, wallets, and similar phone accessories, this program is brand-specific, which means you can only collect PopSockets products. However, you can collect **phone cases from ANY brand** for recycling.

**Swiffer® Recycling Program:** Swiffer refills: Sweeper, Duster and WetJet pads. (Must be this brand only).

**Takis® Snacks:** Takis Snacks, Takis Rolled Tortilla Chips, Takis STIX, Takis POP!, Takis Waves, Takis Kettlez, and Takis Crisps flexible plastic bags and containers. (Must be this brand only).

**Tide Free Recycling Program:** Fabric care products and packaging from brands Tide, Gain, Downy, NBD & Dreft, including plastic components (dispensing cup, bag, nozzle clip) and plastic packaging wrap, flexible plastic bags, rigid plastic tubs and lids and Tide To GO pen. (Must be these brands only).

**Toys & Games: VTech and LeapFrog electronic learning devices and electronic toys program and Hasbro**

**Toys and Games:** For the full list of accepted items, [view the VTech & LeapFrog FAQ](#) and [Hasbro](#) list of accepted items. (Must be these brands only.)

---

#### **Additional Recycling Collections at the St Luke:**

**Aluminum Can Recycling:** Please put cans in the Large labeled wooden box in the front and center of the garage. Please consider recycling your ALUMINUM cans with us instead of just putting them in city recycling. We recycle locally to get money for charity.

**Holiday-Type Light Strands & Cords/Wire/Cable Recycling:** Twinkle light bulbs ok to leave on; larger light bulbs should be removed and can be recycled at the lighting section of our local Menards, Lowes or Home Depot. Please remove any other plastic or metal decor before donating light strands.

**Lion's Club box:** Cell phones; small printer cartridges (**from home use only**); eyeglasses; hearing aids; keys. (ok to drop small items at Common Ground). Lion's Club volunteers manage this for charity. (ok to drop small amounts at Common Ground).

**\*Please - ONLY leave the items listed above.**

#### **TerraCycle Volunteers:**

Amie Keeton [joelamiekeeton@gmail.com](mailto:joelamiekeeton@gmail.com), Janet Guaderrama [jquader@gmail.com](mailto:jquader@gmail.com),  
Melanie Ziomek [mziomek@my.heartland.edu](mailto:mziomek@my.heartland.edu) Marcia Nagy [trek2ak@frontiernet.net](mailto:trek2ak@frontiernet.net)